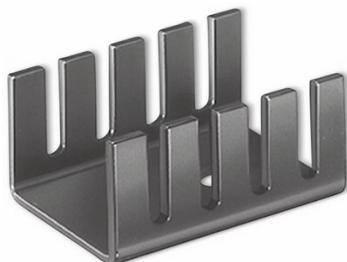
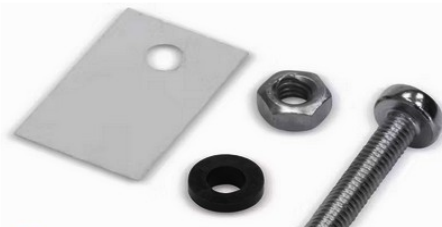


BOM RS-232 Interface Board

ID	Bezeichner	Stückzahl	Bezeichnung	Best.-Nr. REICHEL	Kommentar
1	C1	1	470uF/25V	RAD 470/25	CP_Radial_D10.0mm_P5.00mm
2	C21	1	100uF/16V	SM 100/16RAD	CP_Radial_D5.0mm_P2.50mm
3	C3,C10	2	220uF/16V	KA-A 220U 6,3	CP_Radial_D5.0mm_P2.50mm
4	C8,C9,C13,C15,C16,C17,C18,C14	8	1uF/50V	C3X7R 1,0UB50	C_Disc_D6.0mm_W2.5mm_P5.00mm
5	C19,C20	2	0.1uF/50V	AVX TAP104M035CC	C050-024X044
6	D2	1	1N5819 Shottky	1N5819	D_DO-201AE_P12.70mm_Horizontal
7	D3	1	LED_5V1 Gelb	LED 5MM 2MA GE	LED_D5.0mm
8	HS1	1	Fingerkühlkörper	Pollin: 430180	Fingerkühlkörper_TO220_Horizontal_FK231-SA220
9	IC1	1	LM2575T-5.0V/1A	LM2575 T5,0	TO-220-5_P3.4x3.8mm_StaggerOdd_Lead7.13mm_TabDown
10	IC1	1	Isoliersatz TO-220	Pollin: 442504	
11	IC2,IC3	2	MAX232	MaX 232 DIP	DIL16
12	J1,J2	2	DB9_Female	W+P 107-09-2-1-2	DSUB-9_Female_Horizontal_P2.77x2.84mm_EdgePinOffset7.70mm_Housed_MountingHolesOffset9.12mm
13	J10	1	SGND2	*)	PinHeader_1x03_P2.54mm_Vertical
14	J11	1	GNDSel	*)	PinHeader_1x01_P2.54mm_Vertical
15	J3,J4	2	Barrel_Jack_Switch		BarrelJack_Horizontal
16	J5	1	Floppy_P112_Pwr.	**)	PinHeader_2x07_P2.54mm_Vertical
17	J6,J7	2	Floppy_P112_Conn.	*)	PinHeader_1x06_P2.54mm_Vertical
18	J8	1	PwrSel	*)	PinHeader_1x03_P2.54mm_Vertical
19	J9	1	SGND1	*)	PinHeader_1x03_P2.54mm_Vertical
20	L1,L2	2	330uH 1,28A	L-09HVP 330µ	L_Radial_D10.0mm_P5.00mm_Fastron_07M
21	P4	1	Port1	**)	PinHeader_2x05_P2.54mm_Vertical
22	P8	1	Port2	**)	PinHeader_2x05_P2.54mm_Vertical
23	R1	1	2k7 Metallfilm 1%	METALL 2,70k	R_Axial_DIN0207_L6.3mm_D2.5mm_P10.16mm_Horizontal
24	R2	1	10k Metallfilm 1%	METALL 10,0k	R_Axial_DIN0207_L6.3mm_D2.5mm_P10.16mm_Horizontal
25	R3	1	47R Metallfilm 1%	METALL 47,0	R_Axial_DIN0207_L6.3mm_D2.5mm_P10.16mm_Horizontal
26	R4	1	1k0 Metallfilm 1%	METALL 1,00k	R_Axial_DIN0207_L6.3mm_D2.5mm_P10.16mm_Horizontal
27	SW1	1	Kurzhub-Taster 90°	EBAY, s. Auch 3D-View Bilder	SW_Tactile_SPST_Angled_PTS645Vx58-2LFS
28					
29	*)	2	Pin-Header 1x20	MPE 087-1-020	Pin-Header einreihig 2,54mm vertikal
30	**)	2	Pin-Header 2x20	MPE 087-2-040	Pin-Header zweireihig 2,54mm vertikal
31					



- FISCHER ELEKTRONIK Kühlkörper
- FK 231 SA220 Fingerkühlkörper
- Farbe: schwarz
- Rth: 45 K/W
- Material: Aluminium



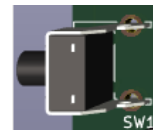
- Isoliersatz für TO220 Gehäuse
- 4-teilig
- Glimmerscheibe, Isolierbuchse, Schraube, Mutter
- Schützt Bauteile vor Kurzschlüssen
- Einfache Montage



Artikel-Nr.: LM2575T-5G

Schaltregler, Step-Down, 5V, 1A, 4,75-40V_i, TO220-5

Typ	Schaltregler
Ausführung	Step-Down
Eingangsspannung	4,75...40 VDC
Ausgangsspannung	5 V DC
Ausgangsstrom	1 A
Bauform	TO220-5
Temperaturbereich	-40...+125 °C
Schaltfrequenz	52 kHz
Versorgungsspannung	max. 45 VDC



SW1_Tactile_SPST_Angled_PTS645Vx58-2LFS
 <= der Taster muß den GANZ KURZEN Stiel haben ! Die betätigung erfolgt über eine extra Verlängerung, s. CAD !